

COMMUNITY IMPACT REPORT

2017/2018



\$1.4B

in net income was generated in 2017/18 by BCLC for the Province of B.C.

\$ MILLIONS

5.6 RESPONSIBLE GAMING EDUCATION AND SERVICES

6.7 LOCAL ECONOMIC DEVELOPMENT INITIATIVES

11.6 HORSEMAN'S PURSE PAYMENTS

13.4 GAMING CORE OPERATIONS

102.1 HOST LOCAL GOVERNMENT

140.0 COMMUNITY GAMING GRANTS

147.2 PROVINCIAL HEALTH SPECIAL ACCOUNT

964.0 TO SUPPORT PUBLIC PROGRAMS, HEALTHCARE AND EDUCATION (CONSOLIDATED REVENUE FUND)

\$3.2B

in gambling revenues (total) was generated in 2017/18 by BCLC.

\$1.3B Lottery & eGaming revenue

\$1.9B Casino & Community Gaming revenue

BC's Gaming Industry

BCLC games are available in almost every community in BC.



3,500 lottery locations



17 casinos



2 racetracks



4 bingo halls



18 community gaming centres



37,000 workers employed directly and indirectly

Community Benefits

BCLC is built on giving back and playing it forward to help communities grow. Today, 88 cents of every dollar played goes back into the Province.



Playing it Forward

The Province of B.C. created BCLC 33 years ago with the purpose of giving back to British Columbia and helping communities grow. Thanks to our players, more than \$21 billion has been delivered to support communities, provincial programs and services, charities and major events that have helped shape B.C.



MISSION SKATEPARK, MISSION

The new Mission Skatepark was built thanks to the provincial gaming revenue that the District of Mission receives for hosting Chances Mission. After a young skateboarder from Mission presented to Council requesting support for building a new skatepark in Mission, Council and Staff embarked on a community engagement program to design the project. Working with Newline Skateparks, the new park opened in July 2016 and is now used by hundreds of kids every week, bringing youth in the community together in a safe and fun environment. “The new skatepark in Mission has had a strong impact on many youth and families in our community. Usage of the park has consistently been near capacity and is full of skaters of all ages, including family members. The reactions are all positive, some stating that it is the best one in the Lower Mainland. Youth in Mission are very proud of the new park. It means a lot to them to see the community invest in something that is specifically for them.” Calvin Williams, Youth Worker and Area Director of Youth Unlimited, Mission.

PARQ VANCOUVER INTRODUCES A NEW STANDARD FOR COLLABORATION WITH COMMUNITIES

Paragon Gaming unveiled Parq Vancouver in fall 2017, making its mark on the way casino entertainment facilities should be developed going forward. Throughout the development of Parq, Paragon Gaming generated many economic and social benefits to the Vancouver community. The service provider made annual donations towards responsible gambling research, provided employment opportunities to at-risk families through in-kind support and partnerships and supported B.C. businesses by using locally sourced construction materials, supplies, furnishings and décor. Additionally, Paragon Gaming has committed to contributing \$300,000 annually to St. Paul’s Hospital Foundation towards creating best practices for people with problem gambling behaviours.

Social Responsibility

Social responsibility is embedded in every aspect of BCLC. We work hard to promote education, awareness and understanding of healthy gambling choices and to provide tools that encourage healthy behaviours while gambling. Through partnerships with research institutions, we improve understanding of gambling issues and how to mitigate them.

Learn more at corporate.bclc.com/social-responsibility.html

HOST LOCAL GOVERNMENT PAYMENTS FOR FISCAL YEAR 2017/18

Each year, local governments that host casinos receive a share of net gaming income generated by those facilities. The following charts show Provincial payments made to Host Local Governments in 2017/18. The calculations for these payments are done in accordance with the Host Financial Assistance Agreement between the Province of British Columbia and each local government.

Net gaming income is defined as net win (revenue after prizes) from casino games less fees payable by BCLC to the casino operator in accordance with International Financial Reporting Standards. Operator fees are attributed to the specific facility and vary by community. BCLC administrative and operating costs are attributed to each facility based on net win from the facility and therefore also vary by community.

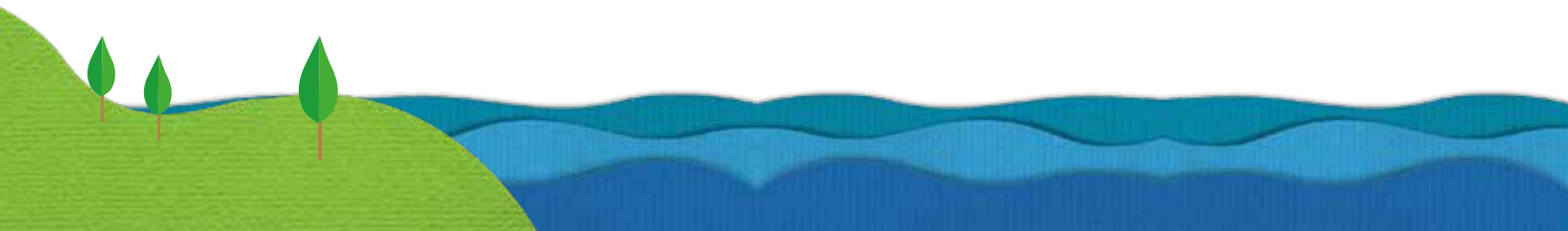
HOST LOCAL GOVERNMENT SHARE OF CASINO REVENUE

in thousands of dollars rounded

Local Government	Casino	Total 2017/18	Total 2016/17
Burnaby	Grand Villa Casino	\$ 11,731	\$ 10,876
Coquitlam	Hard Rock Casino Vancouver	8,634	8,180
Kamloops	Cascades Casino Kamloops	1,905	1,821
Kelowna	Playtime Kelowna ¹	1,930	1,915
Ktunaxa/Kinbasket Tribal Council Society	Casino of the Rockies	995	1,060
Langley City	Cascades Casino	7,688	6,943
Nanaimo	Casino Nanaimo	2,860	2,673
New Westminster	Starlight Casino	6,783	6,381
Penticton	Lake City Casino Penticton	2,056	1,687
Prince George	Treasure Cove Casino	2,682	2,640
Quesnel	Billy Barker Casino	497	479
Richmond	River Rock Casino Resort	17,086	16,972
Surrey	Elements Casino	4,124	4,103
Vancouver	Parq Casino ²	9,433	8,548
	Hastings Racecourse Casino	1,097	1,109
Vancouver Total		10,530	9,657
Vernon	Lake City Casino Vernon	1,972	1,962
View Royal	View Royal Casino	4,166	4,307
Total		\$ 85,639	\$ 81,656

1 Playtime Kelowna—formerly Lake City Casino Kelowna

2 Parq Casino replaced Edgewater Casino during FY 2017/18



“We wouldn’t have the South Okanagan Events Centre if we didn’t have gaming. There’s a real phenomenal mix of events here, including concerts from international superstars. We’re the envy of a lot of communities to have a state-of-the-art facility like this.”

MAYOR ANDREW JAKUBEIT
City of Penticton

“The gaming revenue from Starlight Casino has been a huge benefit to New Westminister. It’s helped to fund new parkland and a trail network in Queensborough that have really allowed residents to experience their city better—and connect with their waterfront.”

MAYOR JONATHAN COTÉ
City of New Westminister

HOST LOCAL GOVERNMENT SHARE OF COMMUNITY GAMING CENTRE REVENUE

in thousands of dollars rounded

Local Government	Community Gaming Centre	Total 2017/18	Total 2016/17
Abbotsford	Chances Abbotsford	\$ 1,221	\$ 1,100
Adams Lake Indian Band	Chances Salmon Arm	524	505
Campbell River	Chances Campbell River	801	749
Castlegar	Chances Castlegar	502	482
Chilliwack	Chance Chilliwack	2,047	1,775
Courtenay	Chances Courtenay	1,046	981
Cowichan Tribes	Chances Cowichan	815	774
Dawson Creek	Chances Dawson Creek	704	578
Fort St. John	Chances Fort St. John	900	774
Kamloops	Chances Kamloops	900	853
Kelowna	Chances Kelowna	2,249	2,132
Maple Ridge	Chances Maple Ridge	1,609	1,404
Mission	Chances Mission	688	664
Port Alberni	Chances RimRock	467	454
Prince Rupert	Chances Prince Rupert	503	483
Squamish Nation	Chances Squamish	266	237
Terrace	Chances Terrace	663	632
Williams Lake	Chances Signal Point	565	588
Total		\$ 16,470	\$ 15,165



BCLC CASINO REVENUE FOR FISCAL YEAR 2017/18

BCLC casino revenue charts show all revenue generated by B.C. gambling facilities on behalf of BCLC for 2017/18. Slot machine and table game revenue is recorded as “net win,” which is revenue after prizes are paid. Bingo revenue is recorded as “Sales,” which is revenue before prizes are paid.

Casino	Service Provider	No. of Slot Machines*	Slot Machine Revenue 2016/17	No. of Tables	Table Game Revenue 2017/18	Total Casino Revenue 2017/18	Total Casino Revenue 2016/17
Billy Barker Casino	585 Holdings Ltd.	122	8,618	4	186	8,804	8,474
Cascades Casino	Gateway Casinos and Entertainment Limited	1,001	112,370	28	26,740	139,110	126,641
Casino Nanaimo	Great Canadian Casinos Inc.	406	45,572	12	4,909	50,481	45,616
Casino of the Rockies	SEM Resort Limited Partnership	229	10,411	5	776	11,187	11,819
Parq Vancouver	Parq Vancouver Casino ULC	580	80,931	75	110,341	191,272	165,827
Elements Casino	Orangeville Raceway Ltd.	542	60,513	24	13,591	74,104	73,422
Grand Villa Casino	Gateway Casinos and Entertainment Limited	1,202	141,781	74	78,629	220,410	205,409
Hard Rock Casino Vancouver	Great Canadian Casinos Inc.	919	113,220	49	47,611	160,831	152,848
Hastings Racecourse Casino	Hastings Entertainment Inc.	536	20,451	-	-	20,451	20,370
Cascades Casino Kamloops	Gateway Casinos and Entertainment Limited	442	31,567	17	3,670	35,237	34,252
Playtime Casino Kelowna	Gateway Casinos and Entertainment Limited	436	29,707	16	6,990	36,697	35,958
Cascades Casino Penticton	Gateway Casinos and Entertainment Limited	400	34,631	11	2,116	36,748	29,219
Lake City Casino Vernon	Gateway Casinos and Entertainment Limited	401	33,420	9	1,721	35,141	34,823
River Rock Casino Resort	Great Canadian Casinos Inc.	1,267	160,397	112	167,327	327,723	337,721
Starlight Casino	Gateway Casinos and Entertainment Limited	934	88,928	54	37,578	126,506	120,882
Treasure Cove Casino	Treasure Cove Casino Inc.	540	45,377	8	2,175	47,551	46,381
View Royal Casino	Great Canadian Casinos Inc.	760	64,362	21	9,515	73,878	74,966
Total		10,717	1,082,258	519	513,874	1,596,132	1,524,629

* Number of slot machines includes electronic table games. Electronic table revenue is reported within Slot Machine Revenue



“The Calvin Kruk Centre for the Arts has been an amazing addition to our city. Thanks to players at Chances Dawson Creek, our community’s quality of life is enhanced with a state-of-the-art facility for the performing arts.”

MAYOR DALE BUMSTEAD
City of Dawson Creek



BCLC COMMUNITY GAMING REVENUE

Community Gaming Centre or Commercial Bingo Hall	Service Provider	No. of Slot Machines*	Slot Machine Revenue	No. of Tables	Table Game Revenue 2017/18	Bingo Revenue 2017/18	Total Community Gaming Revenue 2017/18	Total Community Gaming Revenue 2016/17
Bingo Esquimalt	Great Canadian Entertainment Centres Ltd.	-	-	-	-	3,360	3,360	3,107
Chances Playtime Abbotsford	Playtime Gaming Group Inc.	211	20,946	-	-	95	21,041	19,081
Chances Playtime Campbell River	Playtime Gaming Group Inc.	150	14,090	-	-	546	14,636	13,785
Chances Castlegar	Terrim Properties	100	8,935	-	-	347	9,282	8,754
Chances Chilliwack	Great Canadian Entertainment Centres Ltd.	301	35,158	-	-	4,115	39,273	35,054
Chances Playtime Courtenay	Playtime Gaming Group Inc.	200	18,252	-	-	607	18,858	17,953
Chances Cowichan	Duncan Dabber Bingo Society	157	14,312	-	-	1,445	15,757	14,788
Chances Dawson Creek	Great Canadian Entertainment Centres Ltd.	148	12,522	-	-	477	12,999	10,831
Chances Fort St. John	243045 Alberta Ltd.	150	15,092	9	1,331	257	16,680	14,507
Chances Kamloops	Enterprise Entertainment Ltd.	200	15,829	-	-	3,392	19,221	18,392
Chances Kelowna	Goldwing Investments (Saskatoon) Ltd.	326	37,351	-	-	8,677	46,028	44,126
Chances Maple Ridge	Great Canadian Entertainment Centres Ltd.	200	27,374	-	-	2,072	29,447	26,307
Chances Mission	Gateway Casinos and Entertainment Limited	125	11,651	-	-	790	12,441	12,156
Chances Prince Rupert	0733244 BC Ltd.	102	9,080	-	-	1,274	10,355	9,780
Chances RimRock	Alberni Valley Gaming Association	100	8,243	-	-	822	9,065	8,821
Chances Salmon Arm	Terrim Properties	104	9,234	-	-	757	9,992	9,456
Chances Signal Point	Lucky's Venture Ltd.	123	9,997	-	-	1,380	11,377	11,592
Chances Squamish	Gateway Casinos and Entertainment Limited	99	5,040	-	-	441	5,481	4,816
Chances Terrace	Fort St. John Gaming Centre and Hotel Limited Partnership	75	11,096	-	-	934	12,030	11,604
Harbour City Bingo	Harbour City Bingo Inc.	-	-	-	-	5,886	5,886	5,471
Newton Community Gaming Centre	Gateway Casinos and Entertainment Limited	-	-	-	-	5,302	5,302	5,160
Planet Bingo	Community Gaming Management Association	-	-	-	-	7,709	7,709	7,377
Playtime Langley	Playtime Gaming Group Inc.	-	-	-	-	5,425	5,425	5,700
Chances Playtime Penticton	Playtime Gaming Group Inc.	-	-	-	-	0	0	2,145
Chances Playtime Victoria	Playtime Gaming Group Inc.	-	-	-	-	3,382	3,382	3,379
Treasure Cove Bingo	Treasure Cove Casino Inc.	-	-	-	-	9,881	9,881	9,416
Total Community Gaming Centres & Commercial Bingo Halls		2,871	284,203	9	1,331	69,373	354,908	333,558
Paper Bingo Distribution Revenue		-	-	-	-	245	245	203
Total		2,871	284,203	9	1,331	69,619	355,153	333,761

* Number of slot machines includes electronic table games. Electronic table revenue is reported within Slot Machine Revenue

Head Office

74 West Seymour Street
Kamloops, B.C. V2C 1E2
Telephone: 250.828.5500
Fax: 250.828.5631

Vancouver Office

2940 Virtual Way
Vancouver, B.C. V5M 0A6
Telephone: 604.215.0649

Consumer Services

Telephone: 1.866.815.0222
consumerservices@bclc.com
BCLC's Service Plan is available at
bclc.com/service-plan



bclc

Learn more about BCLC at
bclc.com/playitforward