

# Chilliwack

Community Impact Report

2016/2017



# Chilliwack

## Community Impact Report

### B.C.'s Gaming Industry

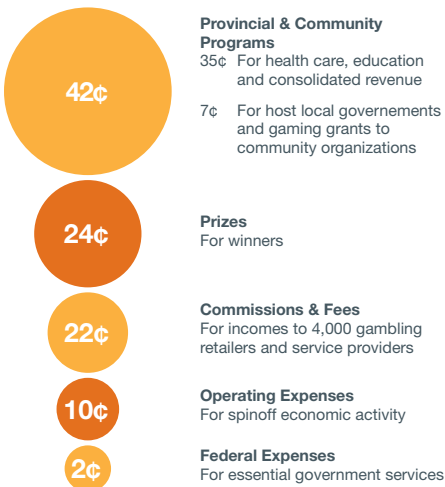
BCLC games are available in almost every community in B.C.

- **3,500** lottery locations
- **6** bingo halls
- **17** casinos
- **18** community gaming centres
- **2** racetracks

BCLC partners with private sector companies to operate gambling facilities in B.C. Under the *Gaming Control Act*, BCLC is responsible for the security and integrity of the games and setting responsible gambling standards and practices.

### Gaming is a significant contributor to the B.C. economy

The Province of B.C. created BCLC to give back to British Columbia and help communities grow. **Thanks to players, more than \$20 billion has been invested in B.C. communities over the past 32 years.** Today, **\$0.88** of every dollar played goes back into the Province.



Across the province gaming employs more than 37,000 workers.

### Gaming in Chilliwack: Local Benefits

#### Players and Facilities

75 per cent of adults in British Columbia gambled with BCLC in the past year: that includes playing a lottery game, visiting a casino, or playing online at PlayNow.com. In Chilliwack, more than **39,300** registered players play our games.



#### Gaming Contributes to the Local Economy

- More than **80** local jobs at Chances Chilliwack
- In 2016, Chances Chilliwack spent **\$795,000** with 70 local vendors in 2016
- Chances Chilliwack paid **\$163,000** in municipal taxes to the City of Chilliwack in 2016
- Great Canadian Casinos has invested **\$25.5M** in capital investments, projects and acquisitions in Chilliwack

Our players look for more than just gaming. As a result, most of our facilities include additional amenities such as the **The Well Public House** at Chances Chilliwack; a restaurant, bar, and pub that delivers live entertainment, a delicious menu and a laid-back, local-feel in a beautiful modern venue.

## Gaming Revenue Funds Local Initiatives

Local governments that host a gaming facility receive a 10 per cent share of the net income those facilities generate. Last year, the City of Chilliwack received **\$1,775,000** generated by Chances Chilliwack to fund local initiatives. Since opening, Chances Chilliwack has generated **\$5.9 million** for the City of Chilliwack.

### Did you know?

As part of a 20-year agreement, Chances Chilliwack provides an annual payment to the Knight Road Legacy Association. Since 2012, KRLA has received **\$1.4 million**.

## Community Gaming Grants

The Province of B.C. allocates **\$135 million** annually to community organizations through the Community Gaming Grant Program.

- **65** organizations in Chilliwack received funding last year
- **\$1.25 million** went to support those organizations in the human and social services sector, public safety, sports, arts and culture, and parent advisory councils

### Did you know?

In 2015/16, Chances Chilliwack supported **68** charities and non-profit organizations.

## Sponsorships

Last year, Chances Chilliwack provided support for **68** local non-profit and charitable organizations and events in Chilliwack, including:

### Chilliwack Bowls of Hope Society—

The Chilliwack Bowls of Hope Society is the chosen signature charitable partner of Chances Chilliwack. The Society has operated the Feed the Children Program through donations of funds and food and the efforts of offenders and community-based volunteers of the Chilliwack Community Correctional Centre. The program currently provides soup and other hot lunch items to 19 schools within the Chilliwack School District where over 600 children receive more than 10,000 bowls of soup each month.

In 2016/17, BCLC delivered **\$1.3 billion** in net income to the Provincial Government to support communities, provincial programs and services, charities and major events that have helped shape B.C.

*Read more about how gaming revenues help communities grow at [playitforward.bclc.com](http://playitforward.bclc.com)*



HEAD OFFICE

74 West Seymour Street  
Kamloops, B.C. V2C 1E2

VANCOUVER OFFICE

2940 Virtual Way  
Vancouver, B.C. V5M 0A6

CUSTOMER SUPPORT

1.866.815.0222

Learn more about BCLC Play it Forward at [bclc.com](http://bclc.com)

**bclc**