

Maple Ridge

Community Impact Report

2016/2017



Maple Ridge

Community Impact Report

B.C.'s Gaming Industry

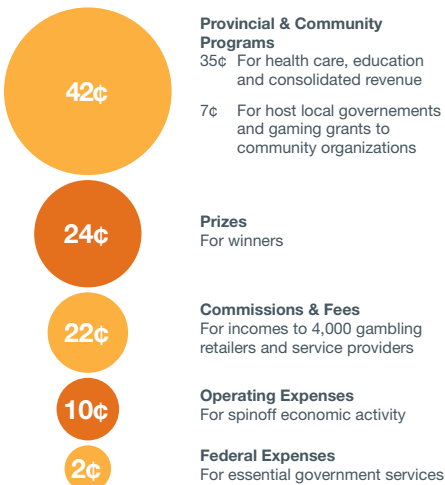
BCLC games are available in almost every community in B.C.

- **3,500** lottery locations
- **6** bingo halls
- **17** casinos
- **18** community gaming centres
- **2** racetracks

BCLC partners with private sector companies to operate gambling facilities in B.C. Under the *Gaming Control Act*, BCLC is responsible for the security and integrity of the games and setting responsible gambling standards and practices.

Gaming is a significant contributor to the B.C. economy

The Province of B.C. created BCLC to give back to British Columbia and help communities grow. **Thanks to players, more than \$20 billion has been invested in B.C. communities over the past 32 years.** Today, **\$0.88** of every dollar played goes back into the Province.

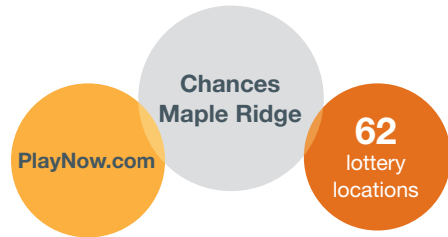


Across the province gaming employs more than 37,000 workers.

Gaming in Maple Ridge: Local Benefits

Players and Facilities

75 per cent of adults in British Columbia gambled with BCLC in the past year: that includes playing a lottery game, visiting a casino, or playing online at PlayNow.com. In Maple Ridge, more than **35,300** registered players play our games.



Gaming Contributes to the Local Economy

- **77** local jobs created by Chances Maple Ridge.
- Last year, Chances Maple Ridge spent **\$521,000** supporting 45 local vendors in Maple Ridge.
- Chances Maple Ridge paid **\$173,634** in municipal taxes to the City of Maple Ridge in 2016.
- Great Canadian Gaming, parent company of Chances Maple Ridge has invested **\$27.5 million** in capital investments, projects and acquisitions in Maple Ridge since its inception.

Our players look for more than just gaming. As a result, most of our facilities include additional amenities such as **The Well Public House**; a restaurant, bar, and pub that delivers live entertainment, a delicious menu and a laid-back, local-feel in a beautiful modern venue.

Gaming Revenue Funds Local Initiatives

Local governments that host a gaming facility receive a 10 per cent share of the net income those facilities generate. Last year, the City of Maple Ridge received **\$1,404,000** generated by Chances Maple Ridge to fund local initiatives.

Sponsorships

Chances Maple Ridge provides support for local non-profit and charitable organizations and events.

Alisa's Wish Child and Youth Advocacy

Centre—In 2015, Chances Maple Ridge announced that it had selected Alisa's Wish as its signature charitable partner with a \$10,000 donation to the organization. Alisa's Wish is a community initiative, managed by Maple Ridge-Pitt Meadows Community Services, that helps all children and youth in Maple Ridge, Pitt Meadows and Katzie First Nations, who have experienced or witnessed abuse of any kind. The Centre has the potential to help 200 victims and their supporting families.

Maple Ridge SPCA—Each year, the Maple Ridge Branch of the BCSPCA helps care and find homes for hundreds of animals in the community. In April 2017, Chances Maple Ridge presented the BCSPCA – Maple Ridge Branch with a cheque for \$2,000 to help the organization continue to support homeless animals in the community.

Did you know? Chances Maple Ridge pays an annual disbursement of **\$100,000** to the Ridge Meadows Bingo Association for distribution to all of their affiliated charitable groups.

In 2016/17, BCLC delivered **\$1.36 billion** in net income to the Provincial Government.

Did you know?

Chances Maple Ridge provided financial and in-kind support for **55** local charities and non-profit groups last year.

Community Gaming Grants

The Province of B.C. allocates **\$135 million** annually to community organizations through the Community Gaming Grant Program.

- **65** organizations in Maple Ridge received funding last year.
- **\$1.53 million** went to support organizations in the human and social services sector, public safety, sports, arts and culture, and parent advisory councils.

In Maple Ridge, performance-based payments from Chances Maple Ridge provide further financial support for **28** non-profit groups in the community.

Read more about how gaming revenues help communities grow at playitforward.bclc.com



HEAD OFFICE

74 West Seymour Street
Kamloops, B.C. V2C 1E2

VANCOUVER OFFICE

2940 Virtual Way
Vancouver, B.C. V5M 0A6

CUSTOMER SUPPORT

1.866.815.0222

Learn more about BCLC Play it Forward at bclc.com

bclc