

Surrey

Community Impact Report

2016/2017



Surrey

Community Impact Report

B.C.'s Gaming Industry

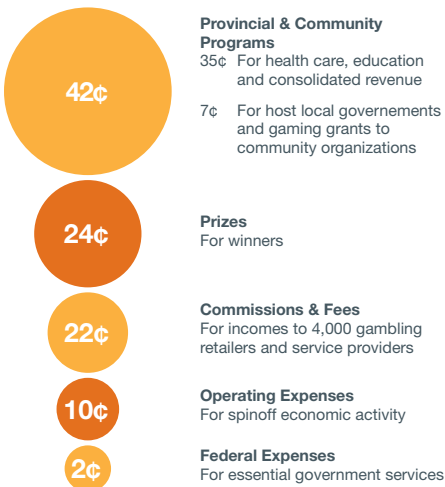
BCLC games are available in almost every community in B.C.

- **3,500** lottery locations
- **6** bingo halls
- **17** casinos
- **18** community gaming centres
- **2** racetracks

BCLC partners with private sector companies to operate gambling facilities in B.C. Under the *Gaming Control Act*, BCLC is responsible for the security and integrity of the games and setting responsible gambling standards and practices.

Gaming is a significant contributor to the B.C. economy

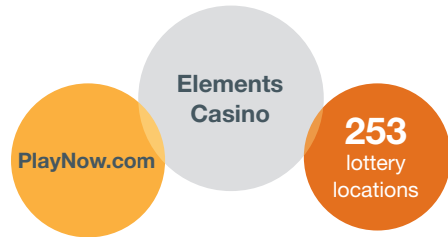
The Province of B.C. created BCLC to give back to British Columbia and help communities grow. **Thanks to players, more than \$20 billion has been invested in B.C. communities over the past 32 years.** Today, **\$0.88** of every dollar played goes back into the Province.



Gaming in Surrey: Local Benefits

Players and Facilities

75 per cent of adults in British Columbia gambled with BCLC in the past year: that includes playing a lottery game, visiting a casino, or playing online at PlayNow.com. In Surrey, more than **172,200** registered players play our games.



Gaming Contributes to the Local Economy

- Elements Casino provides more than **320** local jobs
- Elements Casino spent **\$6.3 million** supporting 165 local vendors in 2016
- Great Canadian Casinos, parent company to Elements Casino has spent **\$90.1 million** on capital investments, projects and acquisitions in Surrey since opening Elements Casino

Our players look for more than just gaming. As a result, most of our facilities include additional amenities such as the **Molson Canadian Lounge** at Elements Casino. The lounge is a great place to grab a bite to eat and a drink, and catch the game.

Gaming Revenue Funds Local Initiatives

Local governments that host a gaming facility receive a 10 per cent share of the net income those facilities generate. Since opening, Elements Casino has generated **\$39.9 million** for the City of Surrey. Last year, the City received **\$4,103,000** generated by Elements Casino to fund local initiatives.

- Gaming revenue helped pay for the construction of the Cloverdale Recreation Centre. The City of Surrey used **\$13.5 million** of its share of provincial gaming revenue to help build the 66,000 square-foot multipurpose recreation centre. Recreation facilities, a youth centre, child care centre and a seniors' lounge provide residents of all ages with fitness, educational, and social activities and events.

Did you know?

In 2016/17, BCLC delivered **\$1.31 billion** in net income to the Provincial Government.

Across the province gaming employs more than **37,000** workers.

Sponsorships

Elements Casino provided support for 85 local non-profit and charitable organizations and event in 2016 including:

Sophie's Place Child Advocacy Centre and the Centre for Child Development is the signature charitable partner of Elements Casino. Sophie's Place is a child advocacy centre focused on providing specialized services to abused children in a safe and child-friendly setting. The Centre for Child Development supports 2,400 children with special needs and their families through 30,000 service sessions per year.

Sources Community Resources Centres

— Sources is a community-based, not-for-profit multi-service agency that serves as a source of help, encouragement and hope for individuals in White Rock, Surrey, Delta, Langley and beyond. In December 2016, Elements collected food and gift donations in the front lobby of the casino in support of the nearly 30,000 people that Sources supports each year.

Community Gaming Grants

The Province of B.C. allocates **\$135 million** annually to community organizations through the Community Gaming Grant Program.

- **220** organizations in Surrey received funding last year
- **\$5.72 million** went to support those organizations in the human and social services sector, public safety, sports, arts and culture, and parent advisory councils. arts and culture, and parent advisory councils

Read more about how gaming revenues help communities grow at playitforward.bcl.com



HEAD OFFICE

74 West Seymour Street
Kamloops, B.C. V2C 1E2

VANCOUVER OFFICE

2940 Virtual Way
Vancouver, B.C. V5M 0A6

CUSTOMER SUPPORT

1.866.815.0222

Learn more about BCLC Play it Forward at bclc.com

bclc