

GAMBLING IN B.C.

- 20 casinos
- 14 community gaming centres
- 2 racetrack casinos
- 1 bingo hall

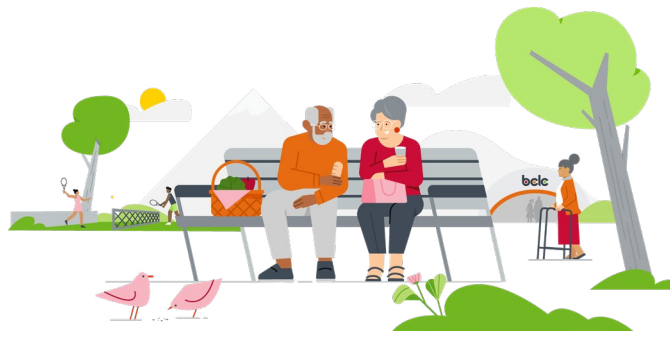
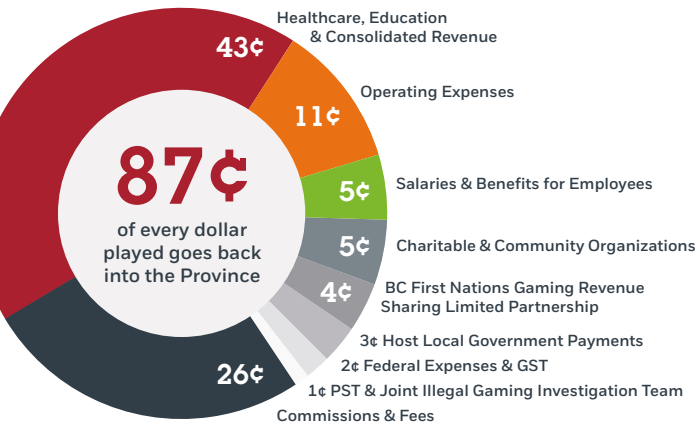
BCLC games are available in almost every community in B.C.

\$1.16 billion
in prizes for lottery, bingo & sports betting in 2022/23

3,400
lottery locations

\$28+ billion
in gambling revenue has been invested in B.C. communities by the Province of B.C. since 1985

Thanks to players, **\$1.6 billion** in net income delivered to the Province of B.C. in 2022/23.



DID YOU KNOW?

In 2022, Great Canadian Entertainment made donations to a variety of organizations from gambling revenue from Chances Maple Ridge. Alisa's Wish Child & Youth Advocacy Centre and Ridge Meadows Hospital Foundation each received donations of \$1,000 or more.

HEAD OFFICE

74 West Seymour Street, Kamloops, B.C. V2C 1E2

VANCOUVER OFFICE

2940 Virtual Way, Vancouver, B.C. V5M 0A6

CUSTOMER SUPPORT

1 866 815 0222



2022/23

Maple Ridge Community Impact Report



GAMBLING CONTRIBUTES

TO THE MAPLE RIDGE ECONOMY

9,728+
registered players

55
lottery locations

1
community gaming centre
CHANCES MAPLE RIDGE



\$1.69
million

generated in 2022/23 by
Chances Maple Ridge for
the City of Maple Ridge to
fund local initiatives

\$2.87 million

Prizes paid out at BCLC's head
offices for 196 winning lottery
tickets purchased in Maple
Ridge in 2022

\$14.34
million
in provincial gambling
revenue shared with the
City of Maple Ridge
since 2013

GAMBLING REVENUE

FUNDS LOCAL INITIATIVES IN MAPLE RIDGE

Last year, the Province of B.C. allocated approximately **\$140 million** to not-for-profit organizations through its Community Gaming Grants program.

76

organizations
in Maple Ridge
received
funding last
year

\$2.27
million

went to support those
organizations in the human
and social services sector,
public safety, sports, arts and
culture, and parent advisory
councils

SPOTLIGHT

COMMUNITY GAMING GRANTS

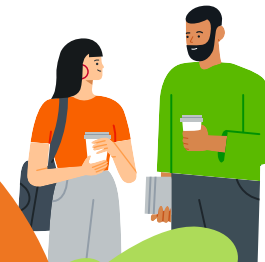
Last year, 38 human and social services along with sport focused organizations in Maple Ridge received Community Gaming Grants, totalling more than \$1.65 million. This funding supports the delivery of accessible and inclusive programs and services within the community.

Organizations in Maple Ridge that received a Community Gaming Grant last year include:

- Ridge Meadows Minor Hockey Association
- Friends in Need Food Bank Society
- One Way Club Society



Read more about how gambling
revenues help communities grow at:
corporate.bclc.com



GENERATING WIN-WINS

IN MAPLE RIDGE

The Province of B.C. created BCLC 38 years ago with the purpose of giving back to British Columbians and to help communities grow. Since that time, thanks to our players, BCLC has delivered \$28 billion in net income to the province to support communities, provincial programs and essential services, charitable organizations and major events that have played a vital role in shaping the province.

Municipalities and First Nations that host gambling facilities use their share of provincial gambling revenue to fund local projects such as the construction of new facilities, improvements to parks, road maintenance, and the implementation of grant programs that aim to enhance the well-being of the community.

Since 2013, the City of Maple Ridge has received more than \$14 million in Host Local Government payments.

Last year, the City of Maple Ridge received \$1.6 million generated by Chances Maple Ridge to fund local initiatives in the community.

PLAYER HEALTH GAME BREAK



It's important to take breaks when gambling. It's a way to pause and regain perspective. However, when it becomes harder to fit in breaks and gambling just doesn't seem fun anymore, BCLC's Game Break program can be the first step towards getting help.

In January 2023, BCLC launched Game Break, a reconceptualized self-exclusion program with an active reinstatement process that strives to reduce stigma and empower individuals to make the right choices for themselves.

When a Game Break term is completed, individuals take part in an online program that encourages self-reflection and awareness before they return to gambling, if they choose to at all. If they are not ready, they have the option to extend their break.

For more information on Game Break visit [GameSense.com](https://www.gamesense.com)