

**GENERATING WIN-WINS
IN B.C.**

**\$1.5
billion**

in net income delivered
to the Province of B.C.
in 2023/24

**\$29+
billion**

has been invested in
B.C. communities
since 1985

3,300+

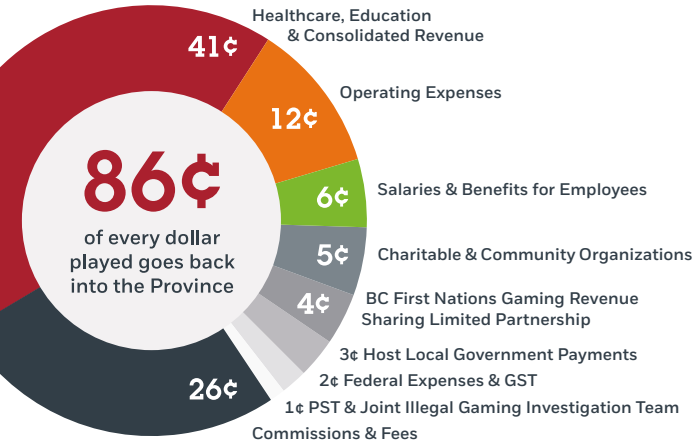
lottery
locations

36

casinos

**\$1.16
billion**

in prizes for lottery,
bingo & sports
betting in
2023/24



**BCLC'S
SOCIAL PURPOSE**

BCLC exists to generate win-wins for the greater good. We generate win-wins by asking our employees, partners, and government stakeholders to continually evaluate the impacts of all activities and decisions on individuals, institutions, communities and the planet. Motivated by our social purpose, every step we take is guided by our purpose and vision to 'revolutionize gambling entertainment through engaging experiences that build and benefit communities.'



**BCLC'S COMMITMENT
TO RECONCILIATION**

Our operations span the entirety of the province that we now call British Columbia. We respectfully acknowledge that we are guests in the territories of more than 200 First Nations, each with unique traditions, cultures, and histories. We are grateful to these First Nations caretakers for their stewardship of these lands and waters since time immemorial.

BCLC is committed to establishing and maintaining good relations with all First Nations, Métis, and Inuit people in British Columbia and beyond. Our journey has only recently begun, and we have a lot of work to do in collaboration with Indigenous Peoples to understand the Truth, reconcile the past, and truly generate win-wins for the greater good, together.

HEAD OFFICE

74 West Seymour Street, Kamloops, B.C. V2C 1E2

VANCOUVER OFFICE

2940 Virtual Way, Vancouver, B.C. V5M 0A6

CUSTOMER SUPPORT

1 866 815 0222

PLAYER SUPPORT

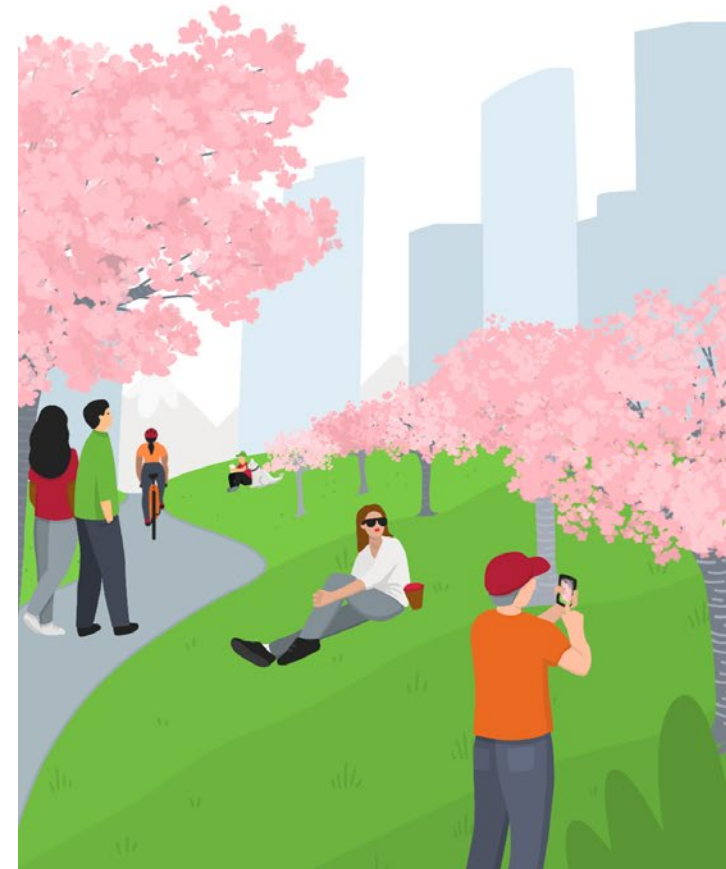
1 866 815 0222 x 3

Visit gamesense.com



2023/24

**Maple Ridge
Community
Impact Report**



GAMBLING CONTRIBUTES

TO THE MAPLE RIDGE ECONOMY

36,861+
registered players

57
lottery locations

1
casino
CHANCES MAPLE RIDGE

\$2.25
million

in prizes paid out at
BCLC's head offices for
189 winning lottery
tickets purchased in
Maple Ridge in
2023

\$15.93
million

in provincial gambling
revenue shared with the
City of Maple Ridge
since 2013

\$1.58
million

generated in 2023/24
Chances Maple Ridge
for the City of Maple
Ridge to fund local
initiatives

\$244,503

paid in municipal taxes
by Chances Maple Ridge
to the City of Maple
Ridge in 2023

Each year, municipal and First Nations governments in B.C. that host a gambling facility typically receive a 10 per cent share of net gambling income generated at those facilities. In fiscal year 2023/24, BCLC generated \$94.5 million for the Province to distribute to 33 Host Local Governments across B.C. to fund local projects and initiatives.

GAMBLING REVENUE

FUNDS LOCAL INITIATIVES IN MAPLE RIDGE

Last year, the Province of B.C. allocated **more than \$140 million** to not-for-profit organizations through the Community Gaming Grants program.

\$2.34
million

went to support those
organizations in the human and
social services sector, public
safety, sports, arts and culture,
and parent advisory councils

75

organizations
in Maple Ridge
received
funding last
year



SPONSORSHIP

RIDGE MEADOWS HOSPITAL FUN RUN

Chances Maple Ridge supported various community events in 2023 including the Maple Ridge Community Foundation golf tournament, the Caribbean Festival, and the Maple Ridge Rotary Duck Race. In addition to providing a financial contribution, a team from Chances Maple Ridge volunteered at, and participated in, the Ridge Meadows Hospital Foundation Fun Run.



Read more about how gambling revenues help communities grow at:
corporate.bclc.com

YOU PLAY

MAPLE RIDGE BENEFITS

The Province of B.C. created BCLC 39 years ago with the purpose of giving back to British Columbians and to help communities grow. Since that time, thanks to our players, BCLC has delivered \$29 billion in net income to the province to support communities, provincial programs and essential services, charitable organizations and major events that have played a vital role in shaping the province.

Municipalities and First Nations that host gambling facilities use their share of provincial gambling revenue to fund local projects such as the construction of new facilities, improvements to parks, road maintenance, and the implementation of grant programs that aim to enhance the well-being of the community.

Since 2013, the City of Maple Ridge has received more than \$15 million in Host Local Government payments. Last year, the City of Maple Ridge received \$1.5 million generated by Chances Maple Ridge to fund local initiatives in the community.



DID YOU KNOW?

LOCAL IMPACT

In 2023, Great Canadian Entertainment made donations to a variety of organizations from gambling revenue from Chances Maple Ridge. Alisa's Wish Child & Youth Advocacy Centre, Friends in Need Food Bank, and the Starfish Pack program each received donations of \$2,000 or more.

Chances Maple Ridge supports the local economy by working with local vendors including First Place Plastic Welding, Ridgecon Consulting, and Unitus Painting.

