

## WHAT'S PLAYED HERE Stays Here

For 40 years, our profits have stayed here in B.C. benefitting B.C. communities.



**\$30+ billion**

has been invested in B.C. communities since 1985

**\$1.15 billion**

in prizes for lottery, bingo & sports betting in 2024/25

**3,300+**

lottery locations

**36**

casinos

**\$1.5 billion**

in net income delivered to the Province of B.C. in 2024/25

## TOGETHER We Win

BCLC exists to generate win-wins for the greater good.

For over 40 years, we've been bringing people together through shared moments of entertainment. Now, we're taking it further by striving to put human connection at the heart of everything we do. From the games we design, to the partnerships we build, or the programs we support, it all comes back to one simple idea: we're better together, and together we win.



**bclc**

## BCLC CELEBRATES ITS 40th Anniversary

BCLC proudly celebrates its 40th anniversary — a significant milestone in our organization's history.

What began as a small organization responsible for lottery games has since grown into a significant contributor to B.C.'s economy and communities. Today BCLC conducts and manages lottery, casinos, sports betting and PlayNow.com across B.C., continues to create entertainment experiences that bring people together and remains deeply committed to helping our people, players, partners and communities thrive.

### HEAD OFFICE

74 West Seymour Street, Kamloops, B.C. V2C 1E2

### VANCOUVER OFFICE

2940 Virtual Way, Vancouver, B.C. V5M 0A6

### CUSTOMER SUPPORT

1 866 815 0222

### PLAYER SUPPORT

1 866 815 0222 x 3

Visit [gamesense.com](https://gamesense.com)

**bclc** 40  
Years

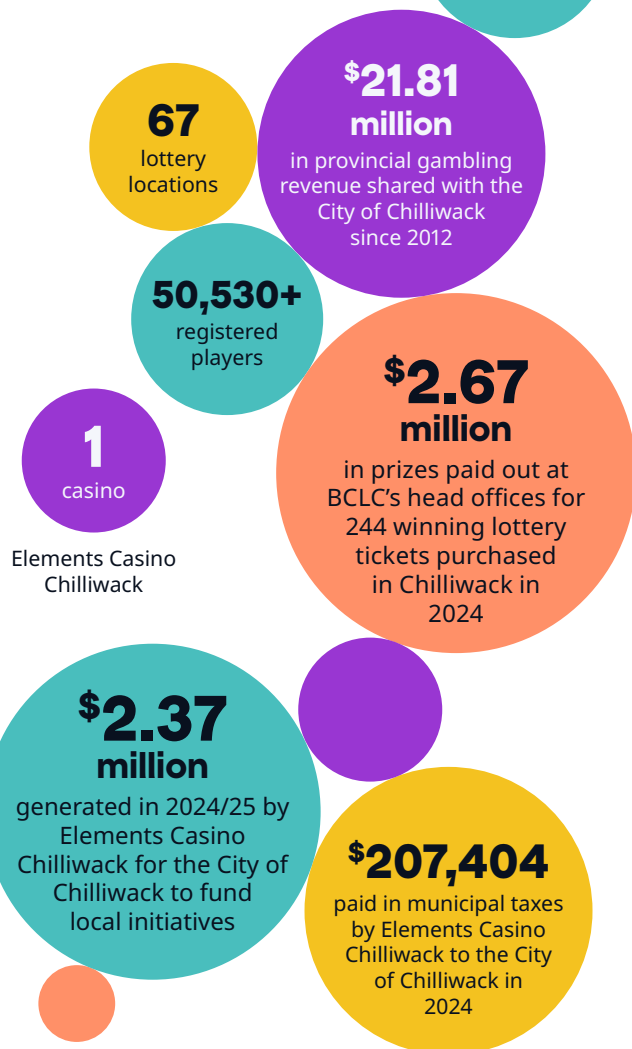
**2024/25**

# Chilliwack Community Impact Report



## GAMBLING CONTRIBUTES TO

### The Chilliwack Economy



Each year, municipal and First Nations governments in B.C. that host a gambling facility typically receive a 10 per cent share of net gambling income generated at those facilities. In fiscal year 2024/25, BCLC generated \$86.6 million for the Province to distribute to 33 Host Local Governments across B.C. to fund local projects and initiatives.

## GAMBLING REVENUE

### Funds Local Initiatives in Chilliwack

Last year, the Province of B.C. allocated more than \$140 million to not-for-profit organizations through the Community Gaming Grants program.



## SPONSORSHIP

### Community Angels Food & Housing Support Society

In 2024, BCLC sponsored the Community Angels Food & Housing Support Society in Chilliwack, supporting their annual Christmas Dinner and Stocking Fund for at-risk seniors.

With over 1,000 individuals registered, the program provided a holiday meal, food hampers, and essential items such as mittens, hygiene supplies, and lip balm. Donation boxes for stocking items were hosted at Elements Casino Chilliwack, which also served as the site for organizing the stockings.



Photo: Maria Kilian

## YOU PLAY

### Chilliwack Benefits

In 2024, the City of Chilliwack allocated its share of provincial gambling revenue to support several local initiatives. Funds were directed toward Chilliwack Community Services programs, including Youth Outreach, Social Development, and Community Crime Prevention efforts. Additionally, a portion of the revenue was invested in road rehabilitation projects to maintain and improve local infrastructure.

## Did You Know?

Chilliwack Community Services offers a Young Family Program that provides one-to-one support for pregnant and parenting youth up to 22 years old. This program assists young parents in accessing community resources, prenatal care, and developing parenting and life skills.

## LOCAL IMPACT

### Community Support

In 2024, Elements Casino Chilliwack supported the community through a combination of financial contributions, volunteerism, and event sponsorships. The site made donations to 11 local organizations and provided 28 in-kind donations to support fundraising events across Chilliwack.

Staff raised over \$17,000 through 35 site-led fundraising initiatives including car washes, raffles, toy drives, and coin drives, and contributed 391 volunteer hours. Highlights included the Annual Toy Drive, collecting nearly \$900 in toys and \$650 in donations for Chilliwack Community Services, and the Annual Barbecue and Carwash, raising more than \$2,500 for Chilliwack Bowls of Hope.

Elements Casino Chilliwack also provided \$29,000 in sponsorships, supporting local organizations such as the Chilliwack Chiefs and the Chilliwack Chamber of Commerce.

Read more about how gambling revenues help communities grow at: [corporate.bclc.com](https://corporate.bclc.com)